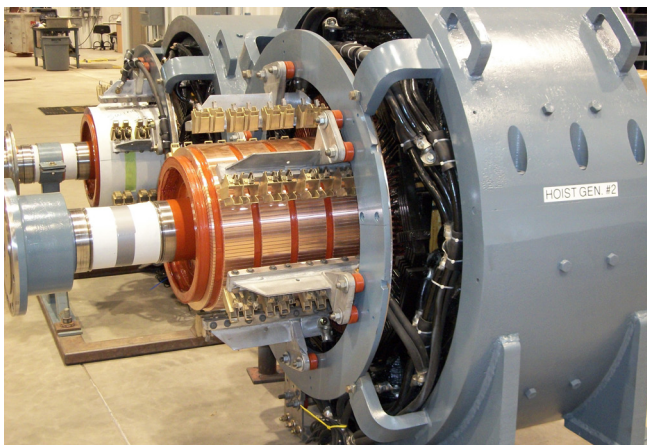


### Equipment Services Offered Gillette, Wyoming Repair Facility

Sulzer EMS specializes in a wide range of mechanical, machining, welding, electrical rotating repairs, hydraulic cylinder repairs and re-manufacturing, grinding and on-site construction services for clients in the mining, power generation, petrochemical, steel and heavy manufacturing business sectors.



#### Machining Facility

- Horizontal boring machines to  $y = 84'' \times 120''$
- Lathes to 48'' swing x 264 long
- Vertical boring machines to 104'' swing 84'' under rail
- Mills, drill presses, grinders, keyseaters

#### On-Site Services

- Equipment removal and installation
- Laser alignment
- Balancing
- Vibration analysis
- Cooling tower maintenance
- Portable line boring / Bars 1- $\frac{3}{4}''$ , 2'', and 3'' diameters
- Welding
- Infrared camera

#### Electrical Repair Facility

- AC motors to 15,000 HP
- AC generators
- DC motors to 10,000 HP
- DC generators to 5 MW
- Traction and Wheelmotors
- DC test panel to 750V - 100A
- AC test panel to 4160
- 20,000 lb. balancing capabilities

#### Mechanical Repair Facility

- Gearboxes
- Pumps
- Blowers/Fans
- Specialty welding / Fabrication
- 40 ton Overhead crane



#### Industries Served

- Manufacturing mining
- Power generation
- Technology
- Transportation
- Water
- Wind energy



#### Sulzer EMS

3382 Bird Drive  
Gillette, WY 82718 USA  
Tel: +1 (307) 682 8733  
Fax: +1 (307) 682 6432  
[www.sulzerts.com](http://www.sulzerts.com)